



Baseball in the United States was a powder keg that was about to detonate. One ignition source was the post-World War II return of hundreds of thousands of military and support personnel. Another was the postwar economy. The war had delivered the country from Great Depression to an historic boom. Baseball exploded, surpassing boxing as the top American sport.

At this very time, Cleveland's League Park was fading into the past. Its increased capacity had peaked at under 23,000, which was increasingly insufficient for the nation's "Sixth City". It was also showing the wear of its half century of use. And, perhaps most urgently at the time, it was completely landlocked.

Of course, during the useful life of the ballpark, its location was useful. Strategic, even. Dating back to the 1890s, two electric streetcars served Hough and Euclid avenues. Patrons of League Park thus had easy access to the games.

But the Henry Fords of the world were fueling consumers' desire to purchase automobiles, and there was no room for parking. The owners of the adjacent properties were unwilling to sell. (Photo at right is

Cleveland Sports Photo Journal: League Park

Written by {ga=googleph2}

Wednesday, March 20 2013 10:00 AM - Last Updated Wednesday, March 20 2013 3:19 PM

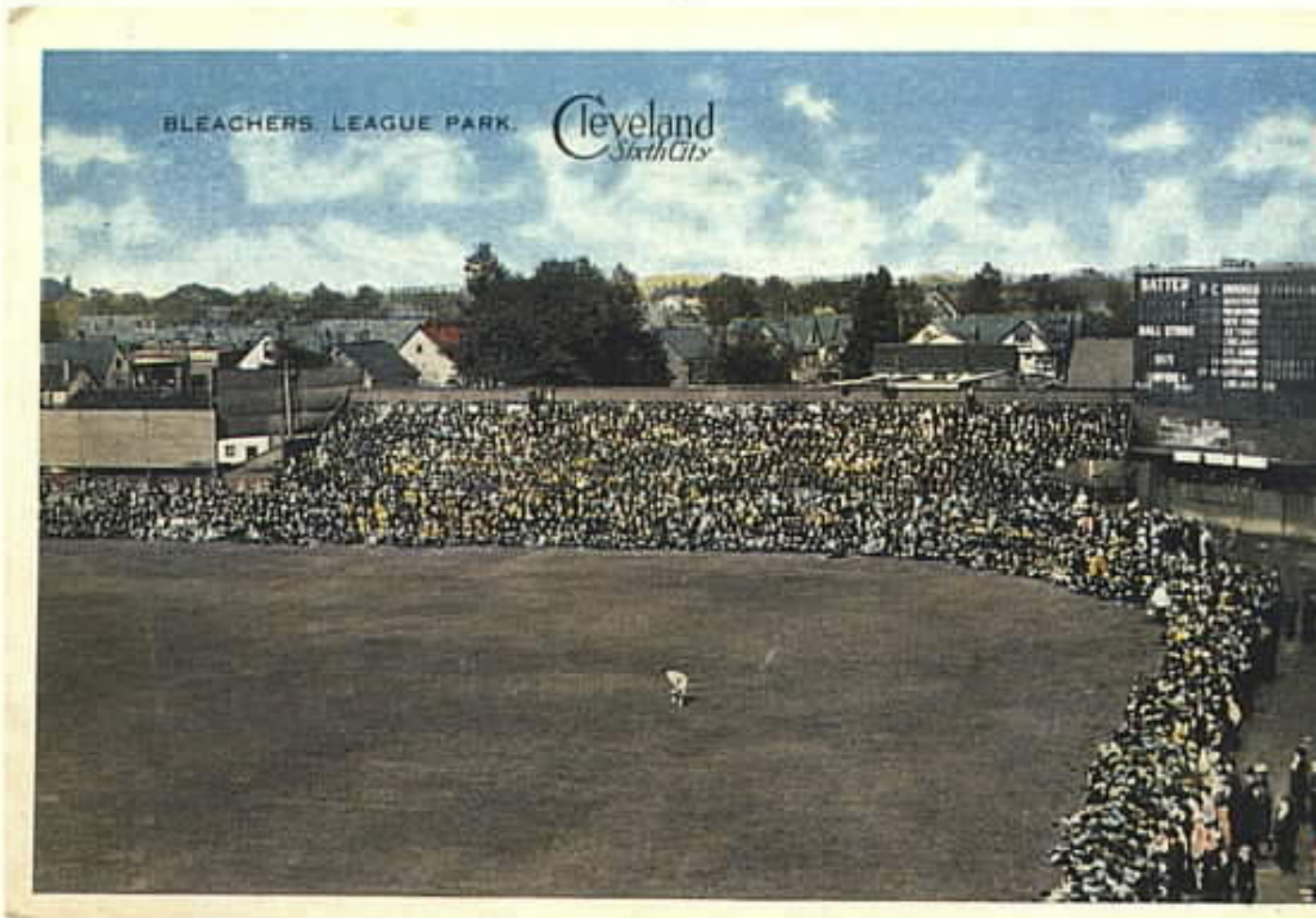


PHOTO BY THE CLEVELAND PRESS

Cleveland Sports Photo Journal: League Park

Written by {ga=googleph2}

Wednesday, March 20 2013 10:00 AM - Last Updated Wednesday, March 20 2013 3:19 PM



Cleveland Sports Photo Journal: League Park

Written by {ga=googleph2}

Wednesday, March 20 2013 10:00 AM - Last Updated Wednesday, March 20 2013 3:19 PM





[Part Two of Alvin Karpis's piece on Waterfield, by Andrew Clayman. It's a two-part article.](#)

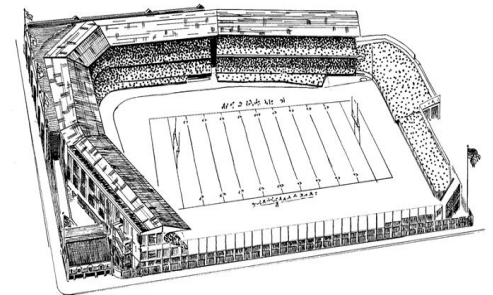
Cleveland Sports Photo Journal: League Park

Written by {ga=googleph2}

Wednesday, March 20 2013 10:00 AM - Last Updated Wednesday, March 20 2013 3:19 PM



Baseball Club, Cleveland, Ohio, 1908. Photo by [unreadable]



Architectural drawing of League Park stadium, showing the field, seating areas, and surrounding structures.

Cleveland Sports Photo Journal: League Park

Written by {ga=googleph2}

Wednesday, March 20 2013 10:00 AM - Last Updated Wednesday, March 20 2013 3:19 PM



Cleveland Sports Photo Journal: League Park

Written by {ga=googleph2}

Wednesday, March 20 2013 10:00 AM - Last Updated Wednesday, March 20 2013 3:19 PM



Cleveland Sports Photo Journal: League Park

Written by {ga=googleph2}

Wednesday, March 20 2013 10:00 AM - Last Updated Wednesday, March 20 2013 3:19 PM



"Sholess" Joe Jackson:

